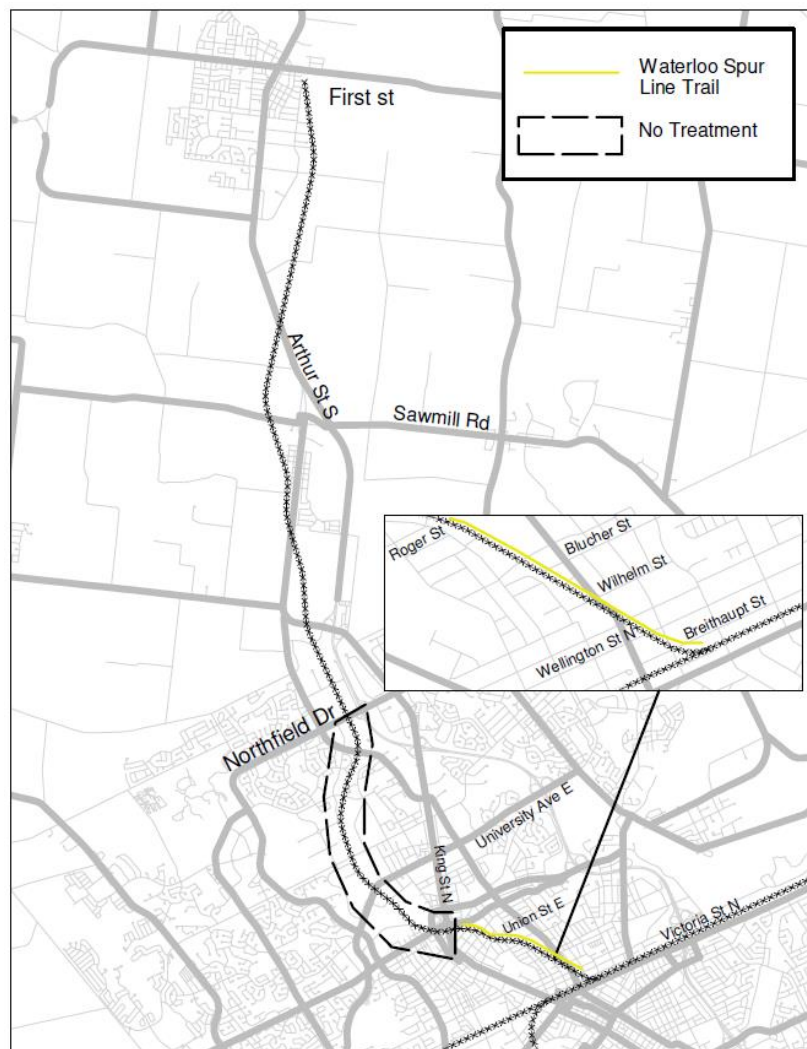


2017 Waterloo Spur Line – Vegetation Control Activities

To comply with federal regulations, the Region of Waterloo has hired Green Stream Vegetation Management Inc. to conduct vegetation control along the Waterloo Spur Rail Line between Breithaupt St. (Kitchener) and First St. S (Elmira), excluding the section between King St. N and Northfield Dr. E. Please note that only the ballast area will be treated. This section is approximately 3m wide and will be treated with a low concentration of the following herbicides: Overdrive, Vantage, and Esplanade. The weed control mixture will be applied with a precision application vehicle outfitted with skirting to prevent overspray. The remaining vegetation outside the ballast area will be maintained with conventional tractor mounted mowing equipment at a later date.

Spraying is scheduled from June 26, 2017 10:00pm to June 27, 2017 10:00am (with a rain date of the following night.



Waterloo Spur Line Trail closed

The Waterloo Spur Line Trail will be closed between Breithaupt St. and King St. N to the public for twelve (12) hours on June 26, 2017 from 10:00pm to June 27, 2017 10:00am. (With a rain date of the following night) Signs will be posted to notify trail users one week in advance of treatment. Signs will be removed 24 hours after application.

What Herbicides are being applied

The following herbicides will be applied by Green Stream Vegetation Management Inc. These substances have been evaluated and approved by Health Canada's Pest Management Regulatory Agency.

Overdrive Herbicide Reg. # 30065, Active Ingredients Diflufenzopyr (present as sodium salt) and Dicamba (present as sodium salt), Under the Pest Controls Act (Canada).

Vantage Herbicide Reg. # 29994, Active Ingredient Glyphosate (present as dimethylamine salt), Under the Pest Controls Act (Canada).

Esplanade Herbicide Reg. # 31333, Active Ingredient Indaziflam, Under the Pest Controls Act (Canada).

Why is vegetation control required along railways

Transport Canada requires the Region of Waterloo to maintain tracks to federal safety standards by eliminating vegetation on the railway tracks. Grass, weeds, and other plants can impede railway safety in a few ways:

- Plants growing over the tracks can cause slipping, which causes a train to take longer to stop
- Dry plants can catch fire
- The deterioration of the rail tracks is expedited when surrounded by plants and the moisture they contain. The roots can also upheave railway ties.
- Plants make it very difficult to inspect the tracks for potential problems.

Questions and Answers

Why does the Region of Waterloo need to remove weeds and vegetation along its train tracks annually?

Weeds and vegetation along railway tracks can cause fires, rail bed and track damage due to poor drainage, signal failures at road crossings, longer train stopping distances and/or poor site lines at trail crossings and roadways.

Weed removal is required to keep railway tracks safe as well as to allow inspections, repairs, and maintenance to Transport Canada standards.

Has Region of Waterloo tried any non-chemical weed control options in the past, such as weed whacking? Have they worked?

The Region of Waterloo has used weed cutting/whacking in the past to control weeds, but this does not remove the roots, and actually encourages more growth therefore it is not an effective long-term solution for weed removal along railway tracks.

Why can't the Region of Waterloo use a vinegar only solution to control weeds?

High concentrate vinegar does not control and eliminate weeds but temporarily burns the vegetation above the soil. The vinegar does not destroy the weed's root system, which causes maintenance and drainage issues leading to track failure.

Many properties back onto the railway, are Overdrive, Vantage, and Esplanade safe to use in close proximity to people and pets?

Used according to label directions, Overdrive, Vantage, and Esplanade have been evaluated by Health Canada's Pest Management Regulatory Agency (PMRA) to be safe. PMRA has the toughest regulatory requirements in the world in approving and deeming products safe for use within Canada. All three substances are approved for use in parking areas, school yards, parks, golf courses and other public areas.

Where and when will the 2017 weed control take place?

The weed control activities will take place June 26 between 10:00 pm and June 27, 2017 10:00 am with a rain date of following night. The limits of spraying are Breithaupt St. (Kitchener) and First St. S (Elmira), excluding the section between King St. S and Northfield Dr. E.

When was the last time chemical weed control was performed along the Waterloo Spur?

Weed control spraying was last completed in 2015 on the Waterloo Spur. Canadian National (CN) and Canadian Pacific (CP) owned rail lines in the Region of Waterloo are sprayed annually. The CN or CP rail lines are not owned or maintained by the Region of Waterloo.

What do other Ontario municipalities use as part of their weed control programs along rail lines?

The Region of Waterloo and City of Guelph are the only known municipalities that own a railway line. Canadian National (CN) and Canadian Pacific (CP) are the only other two railways that operate in Southwestern Ontario, their vegetation control plans and information can be found at the following web sites:

- [Guelph Junction Railway Vegetation Control Information](#)
- [Canadian National Railways Pest Management Plan for Integrated Vegetation Control](#)

- [Canadian Pacific Railway Integrated Vegetation Management Plan](#)

For More Information

Matt Ropp, Supervisor – Technical Operations

Region of Waterloo

(519) 650-8202

